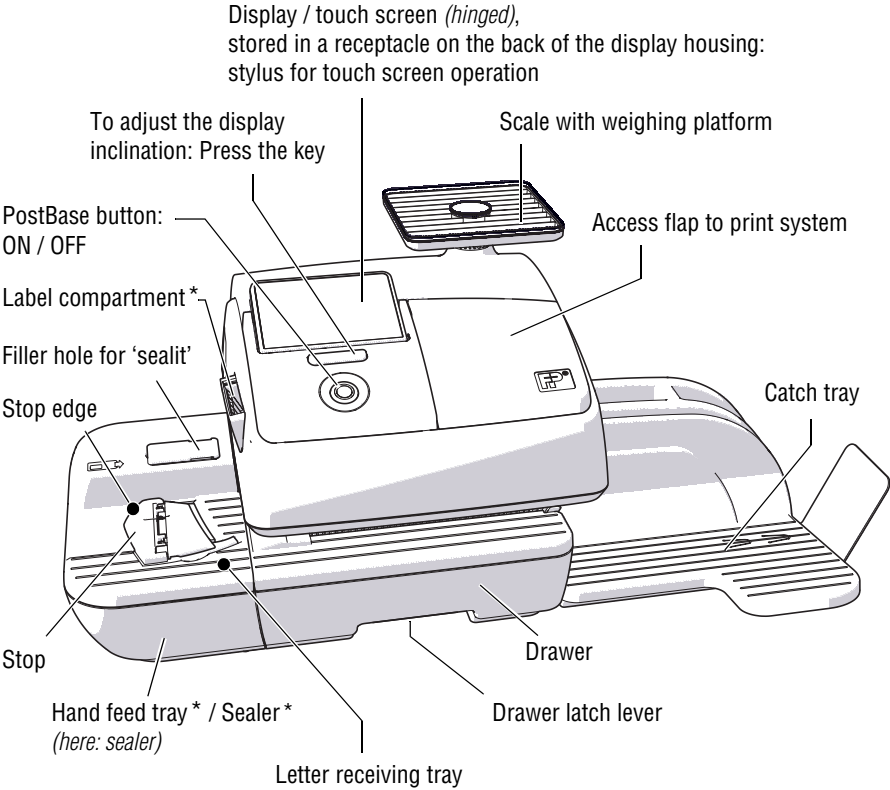


2 A short description of the PostBase

2.1 PostBase franking machine – overview

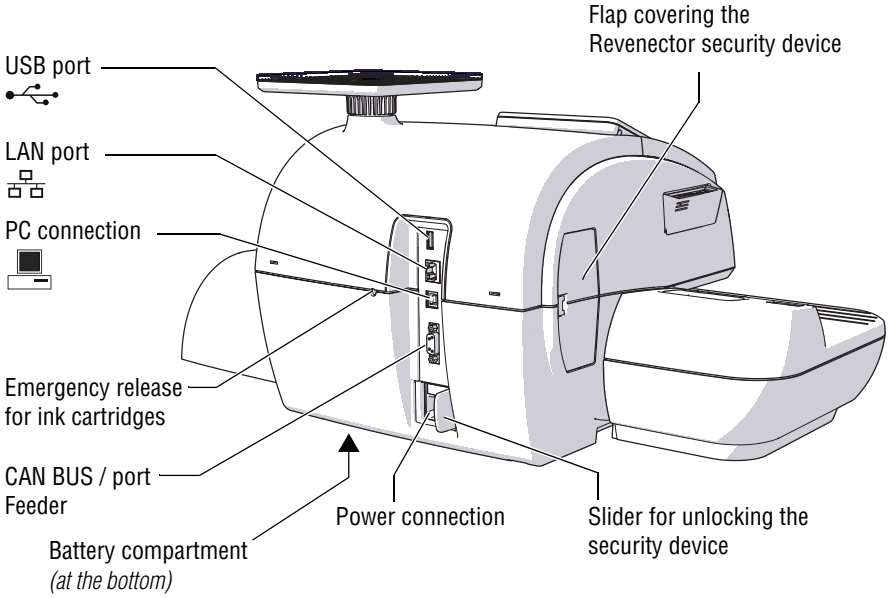


* optional / not all product variants

Works Cited:

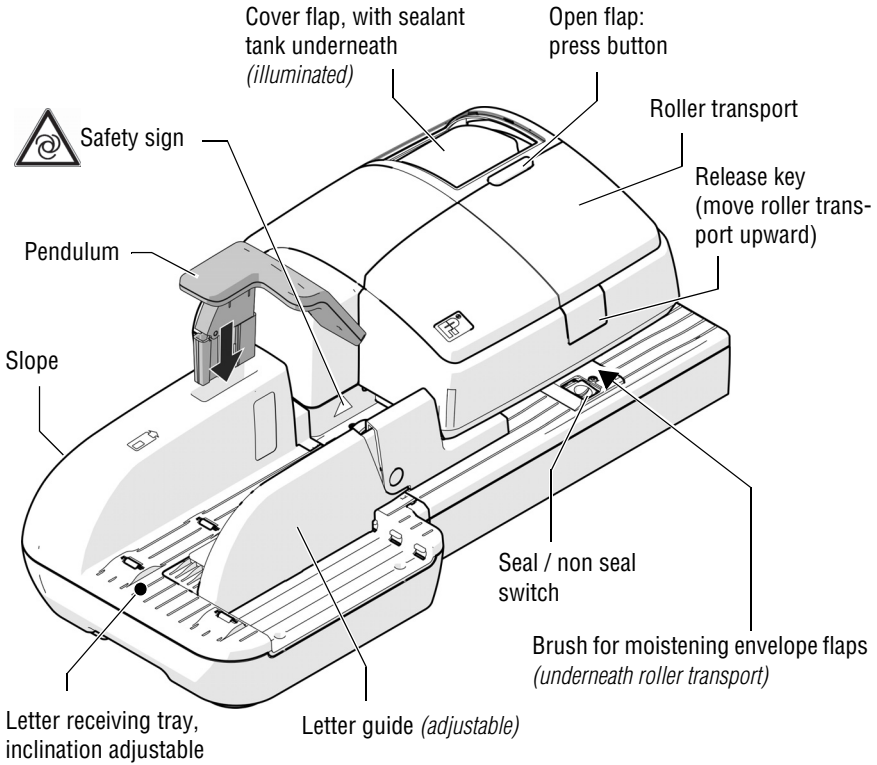
FP. "Operating Manual." PostBase Pro (DS) Support, Feb. 2014, download.fp-usa.com/product_docs/PostBase/PostBase-Econ/Documents-Manuals/postbase_manual_w_us_addendum.pdf.

Franking machine – rear view



Works Cited:

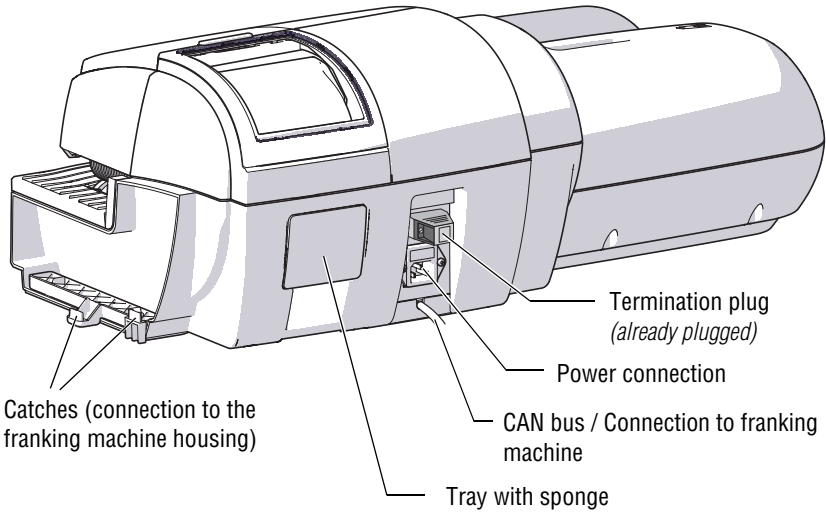
2.2 Feeder – overview *(optional)*



Works Cited:

FP. "Operating Manual." PostBase Pro (DS) Support, Feb. 2014, download.fp-usa.com/product_docs/PostBase/PostBase-Econ/Documents-Manuals/postbase_manual_w_us_addendum.pdf.

Feeder – rear view



(View without pendulum)

2.3 Things worth knowing about PostBase

Modular design

PostBase is a digital mailing system featuring a touch screen and ink-jet print technology.

In its basic version, the mailing system consists of the PostBase franking machine with integrated scale, a hand feed tray and a letter catch tray.

This basic version can easily be extended with optional components.

Works Cited:

<i>Franking</i>	<p>To frank a letter, simply position it with the side to be printed on facing up – PostBase will seize the letter and frank it, after which it is exited to the right side ready for dispatch.</p> <p>Franking is possible on mail pieces made of ink-absorbing material – postcards to 10 mm (0.4") thick letters in ISO B4 format – and special self-adhesive labels.</p>
<i>Letters as advertising medium</i>	<p>In addition to printing postage, you can print custom advertisements of your choice and text messages on every mail piece you send (<i>not available in all countries</i>).</p>
<i>Download postage</i>	<p>Load postage from the data center directly into your franking machine – fast, easy and, if need be, 24 hours a day (<i>not available in all countries</i>).</p>
<i>Flexible and up to date</i>	<p>The PostBase franking machine ensures you are always using the current postal rates. Whether new postage rates or new adverts – the data center loads current data directly into your franking machine.</p>
<i>Access control</i>	<p>The PostBase franking machine can be protected against unauthorized use via a PIN.</p>
<i>Additional functions</i>	<p>The PostBase mailing system offers a range of convenient additional functions. Among these are:</p> <ul style="list-style-type: none"> – Scale. The space saving, integrated scale quickly and reliably determines the weight for letters and parcels. The determined weight directly affects the product settings. – Shortcut function for frequently used postal products. – Account function for separate registration and billing of postage costs. – Print lists of register states and loading report. – Variable imprint offset for changing the franking imprint position on the envelope (<i>not available in all countries</i>).

Works Cited:

FP. "Operating Manual." PostBase Pro (DS) Support, Feb. 2014, download.fp-usa.com/product_docs/PostBase/PostBase-Econ/Documents-Manuals/postbase_manual_w_us_addendum.pdf.

Options

The following features are available for functionality extension:

- **Label dispenser** to print self-adhesive labels, for large or thick mail pieces or for envelopes that are not suited for ink-jet printing.
- **Feeder.** Automatic feeder with sealer for the PostBase. The letters are separated from the stack, optionally moistened and sealed, and fed to the PostBase franking machine.
- **Sealer.** Manually pass the open envelope through the sealer. The moistened flap will be closed in the PostBase during subsequent franking. *(Not available in all countries.)*
- **Differential weighing.** A special weighing mode of the integrated scale that helps you save time when weighing and franking large amounts of similar mail pieces.
- **Controlling PostBase via PC software.** FP offers software for controlling and administration of the franking machine via PC, e.g. Navigator, RemoteOne, ReportOne, MailOne *(not available in all countries).*

Works Cited: